

# Epson TM-L500A

## Airline BTP and ATB Printer



Epson's TM-L500A thermal printer is the affordable solution for printing boarding passes and bag tags. It features high-speed printing, reliability and support for AEA 2009 and all major passenger processing systems.

### Designed for Airline requirements

Unlike some airline printers that were originally developed for POS systems, the TM-L500A is designed specifically for printing boarding passes and bag tags. It offers fast printing of boarding passes and bag tags at check-in counters, kiosks or gates at up to 10 inches per second. It features an advanced paper path with damper and guides to greatly reduce jams and can use fan-fold or large roll media. It prints 2D barcodes including PDF417, QR Code, Aztec and Datamatrix.

### Autocutter with Auto Cut Switch (ACS)

All TM-L500A models include an autocutter capable of cutting a range of media including thin boarding pass coupons, heavy ATB ticket stock and bag tags. In ATB models, the boarding passes are cut and stacked in the boarding pass tray. Bag tag models feature an Auto Cut Switch (ACS) that allows printed bag tags to remain attached to the roll until the tag is lifted by the agent. ACS senses this motion and activates the autocutter producing a cleanly cut bag tag and an undisturbed paper path, thus preventing bag tag jams.

### Modular all-in-one printer mechanism

All of the mechanical printer parts affected by wear are assembled into a single printer mechanism module. When a printhead, autocutter, platen or other component wears out, this module is easily replaced which means that all the parts that can wear out in the printer are replaced at one time. This yields a completely refurbished and virtually new printer, all at a cost lower than others charge for replacing the printhead alone. This module is derived from Epson's M-T500 printer mechanism used in over one million ATMs.

### Supports industry standards

The TM-L500A supports industry standards including AEA 2009 and IATA CUSS/CUPPS. It is compatible with all major common use and dedicated passenger processing systems in use today.

### Easy system integration

With its support of industry standards and USB, Serial and Ethernet interfaces, the TM-L500A is a drop-in replacement for most ATB and BTP printers. And Epson's expert integration team ensures installation is trouble free.

- Designed specifically for printing boarding passes and bag tags
- Handles fan-fold or roll media up to 7.25" in diameter
- Fast print speeds up to 10 inches (250mm)/second
- Standard USB and Serial interfaces
- Autocutter standard on all models
- Auto Cut Switch standard on bag tag models
- Easily replaced and affordable modular printer mechanism
- Supports AEA 2009 print commands and Windows®
- IATA CUSS/CUPPS compliant

# High-Performance Printer for Bag Tags and Boarding Passes

## World class service and support

Epson's TM-L500A is backed by Epson's industry-leading service and support programs. Epson Advanced Product Support and trained Epson service providers are ready to help you resolve any issues in a timely manner.

## Printer

Print method	Thermal line printing
Print resolution	203 x 203 dpi
Print speed	
Roll paper	10 inches (250mm)/sec maximum
Boarding pass	8 inches (250mm)/sec depending on media quality
Baggage tag	8 inches (200mm)/sec depending on media quality
Print fonts	
Fonts	12 x 24
Column pitch	1.5mm (0.06")
Character size	1.25(W) x 3.0(H)mm (0.05" x 0.12")
Character set	AEA, 95 Alphanumeric, 37 International, 128 x 11 Graphic
Barcode	EAN 13, Interleaved 2 of 5, Industrial 2 of 5, Code 39, Code 128
Two-dimensional code	PDF417, QR Code, Aztec, Datamatrix
Paper	
Fan-fold and roll widths	54.0 ± 0.5mm, 79.5 ± 0.5mm, 82.5 ± 0.5mm
Roll diameter (max)	184.2mm
Reliability	
Printer life	5 years
Print head life	100km
Autocutter life	Up to 1,000,000 cuts depending on media
MTBF	360,000 hours

## General information

Interface	USB + Serial (standard), Ethernet (optional)
Power	24 VDC ± 2.4 V
Power consumption	Approx. 2.0A
Operating temperature	5 to 45°C (storage -25 to 50°C)
Overall dimensions	
ATB	156 x 328 x 148mm (W x D x H)
BTP	156 x 236 x 148mm (W x D x H)
BTP and roll holder	156 x 496 x 148mm (W x D x H)
Weight (approx.)	2.8 kg (6.17 lbs) 4.6 kg (10.14 lbs) with optional roll holder and no media
EMC standards	FCC class A
Safety standards	UL, CSA, CE, TÜV, GOST-R
Warranty	One-year limited warranty (excludes consumables)

## Backed by the leader

Epson is the number one manufacturer of thermal printers in the world. Our printers are at work in over 300 million systems worldwide and are renowned for their advanced technology, quality, reliability and low cost of ownership.

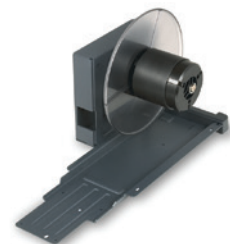
## What's in the box

TM-L500A printer  
AC adapter  
User's guide

	BTP	ATB
<b>Printer Features</b>	<b>Bag Tag Printer</b>	<b>Boarding Pass Printer</b>
With LCD Display	TM-L500A-118	TM-L500A-107
Without LCD Display	TM-L500A-119	TM-L500A-114
With LCD Display and RFID Encoder	TM-L500A-700	—
<b>Accessories</b>		
AC Cable – US 120VAC	205498100	205498100
Roll Paper Holder	SU-RPL500B	SU-RPL500B
Ethernet Interface Board	UB-E500	UB-E500
<b>Consumables</b>		
Replacement Printer Mechanism	ML-500-904	ML-500-902



**ML-500  
Replacement Printer  
Mechanism**



**SU-RPL500B  
Roll Paper Holder**



**TM-L500A with LCD for ATB**



**TM-L500A with LCD for BTP  
(shown with Roll Paper Holder)**



**TM-L500A for ATB**



**TM-L500A for BTP**



04/2014  
SD-DSL500AAEROD



Epson America, Inc. • 3840 Kilroy Airport Way • Long Beach, CA 90806 • (562) 290-5304  
©2014 Epson America, Inc. Epson is a registered trademark and Epson Exceed Your Vision is a registered  
logomark of Seiko Epson Corporation. ENERGY STAR and the ENERGY STAR logo are registered trademarks/  
logomarks of the U.S. Environmental Protection Agency. All other trademarks are the property of their respective  
owners. Specifications are subject to change without notice.

**EPSON®**  
EXCEED YOUR VISION  
[pos.epson.com/aero](http://pos.epson.com/aero)